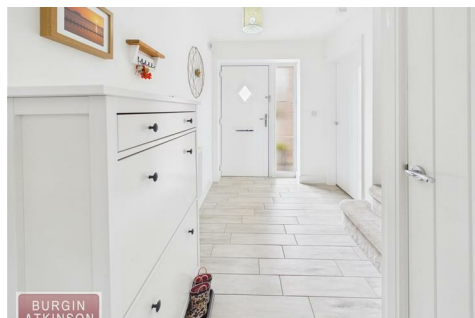


BURGIN ATKINSON

& C O M P A N Y

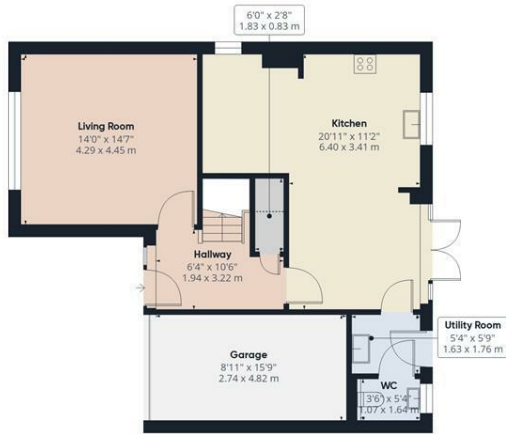


10 Forester Gardens, Retford, DN22 6UR

MODERN 4 BED DETACHED HOME - PRIVATE NEW BUILD CUL-DE-SAC - NO ONWARD CHAIN - OPEN PLAN KITCHEN DINER - EN-SUITE TO MAIN BEDROOM - LANDSCAPED REAR GARDEN WITH HOME OFFICE - INTEGRAL GARAGE + OFF STREET PARKING FOR 2 CARS - EPC RATING : B

- 4 Bed Detached Family Home
- Offered with No Onward Chain
- Open Plan Kitchen Diner
- En-Suite to Main Bedroom
- Off Street Parking + Integral Garage
- Landscaped Rear Garden
- Garden Office with Lighting and Power
- Quiet New Build Cul-de-Sac

£385,000



Ground Floor Building 1



Floor 1 Building 1



Approximate total area^m
 1567 ft²
 145.5 m²

Reduced headroom
 7 ft²
 0.6 m²

(1) Excluding balconies and terraces

Reduced headroom
 ----- Below 5 ft/1.5 m

Calculations reference the RICS IPMS 3C standard. Measurements are approximate and not to scale. This floor plan is intended for illustration only.

GIRAFFE360

